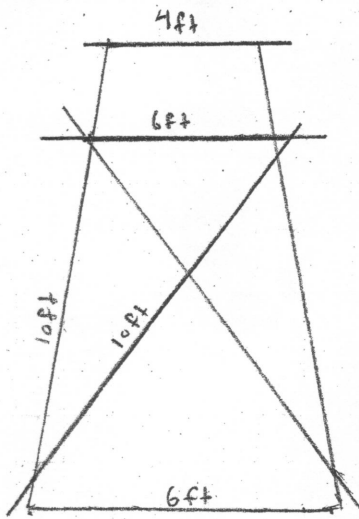
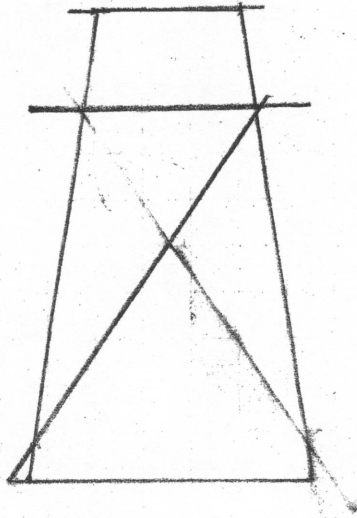


1:1 ft  
Front view

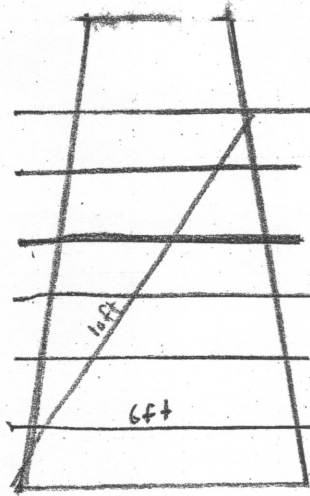


Sides 1 & 2

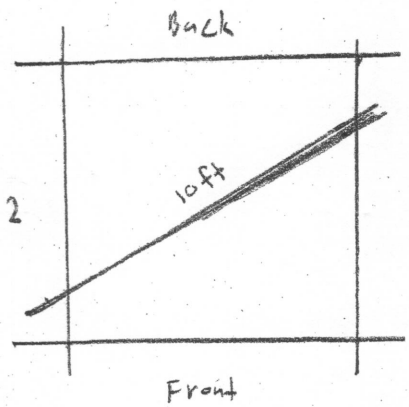
COLEY TOWER



Back side



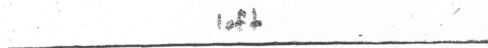
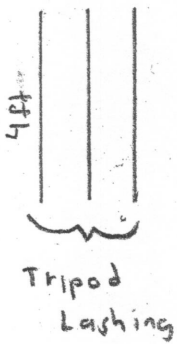
Front side



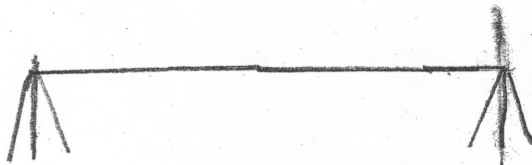
- 4ft Hand rails x 3
- 6ft Horizontals / Ladder Rungs x 13
- 10ft Uprights x 4
- 10ft cross pieces x 7
- ~4ft Floor pieces ~15
- 15ft Rope x 5

1:1

Rope Rack



- 4ft Tripod Legs x 6
- 10ft Rack x 1
- 15ft Rope x 2



Front view

a fence can be used for one end of the rack. If so, material becomes:

- 4ft Tripod Legs x 3
- 10ft Rack x 1
- 15ft Rope x 1